

Tank Truck Fittings: Sight Flow Indicators

TTMA Flanged Sight Flow Indicators



Size	Nominal Width	Acrylic Part #
3"	1¾"	TT3ASG
4"	1¾"	TT4ASG
3"	1¾"	TT3ASG-ETH¹
4"	1¾"	TT4ASG-ETH¹

Optically Enhanced Sight Glass

Size	Nominal Width	Acrylic Part #
3"	1¾"	TT3ASGOE
4"	1¾"	TT4ASGOE
3"	1¾"	TT3ASG-ETHOE¹
4"	1¾"	TT4ASG-ETHOE¹

¹ for use with ethanol

- For flange dimensions, diagrams and additional information please reference dixonvalve.com.

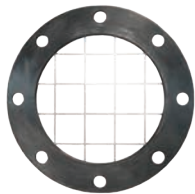
Sight Flow Indicator Repair Kits



5200-SFIV-RK1

Description	Used on	Part #
3" replacement sight glass, Baylast™ O-ring and retainer ring kit	---	5200-SFI-3-RK1
3" replacement sight glass, FKM O-ring and retainer ring kit	---	5200-SFI-3V-RK1
4" replacement sight glass, Baylast™ O-ring and retainer ring kit	---	5200-SFI-RK1
4" replacement sight glass, FKM O-ring and retainer ring kit	---	5200-SFIV-RK1
replacement Baylast O-rings, sight glass and retaining ring	5201-SFI	5201-SFI-RK1
Buna-N O-ring	---	O249BU
plexiglass insert	---	4PSG
Buna-N O-ring	---	O246BU

TTMA Flange Screen



Feature:

- stainless steel screen is encapsulated in an FKM gasket

Male NPT	Description	Stainless Steel Part #
2"	screen with 1" square holes	TTFS4SS

- For flange dimensions, diagrams and additional information please reference dixonvalve.com.